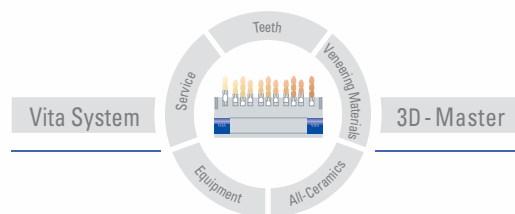
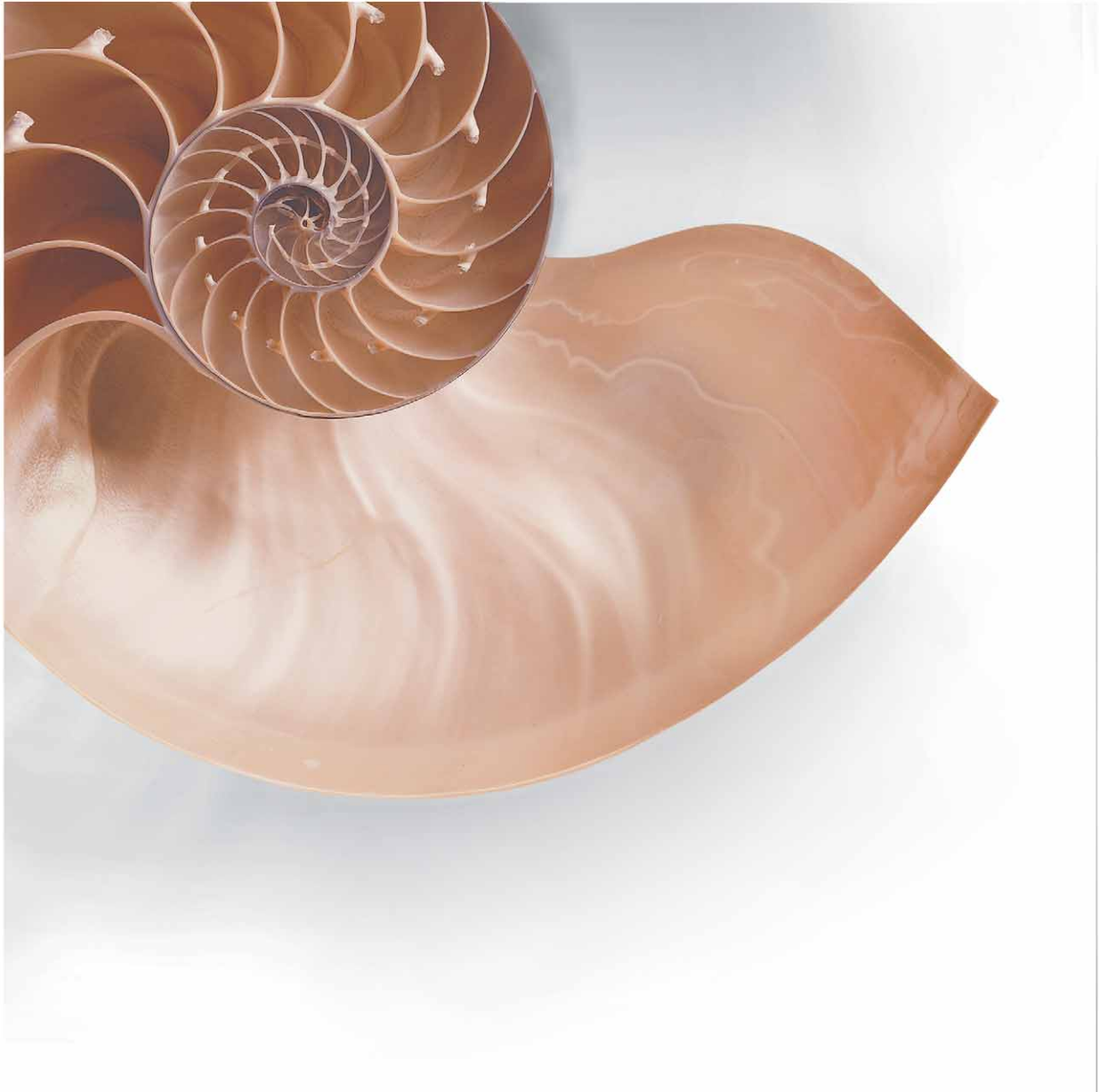


VITA Teeth

Customizing acrylic teeth
with VITAVM[®]LC



VITA

Enhanced aesthetics for partial and full dentures

Why customizing prefabricated teeth?

Persons wearing dentures also want to have aesthetic high-quality restorations. Patients got accustomed to high level prosthetic restorations since in numerous cases they had previously received a ceramic restoration. The demand for individual restorations in the sector of full and partial dentures is growing stronger due to the increase in the proportion of older patients.

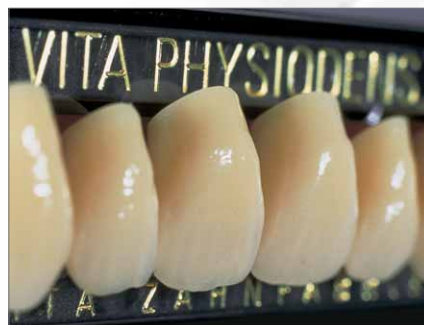


VITA PHYSIODENS® Anteriores

As an element of dental restorations, VITA PHYSIODENS fulfill the high requirements already as prefabricated teeth. If additional customization of the acrylic teeth is desired for a patient or if adaptation to the residual teeth is required for a partial restoration, patient-specific aesthetics can be achieved through simple, easily reproducible characterization.



Their lifelike surface structure and natural shape provide perfect preconditions for patient-specific restorations. Additionally, the corporeal designs allow closure of interdental spaces.





How do you proceed when you intend to customize acrylic teeth?



Customization in the incisal and neck area can be successfully completed within limited working time:

Palatal reduction of the VITA PHYSIODENS anterior is required for customization in the incisal area. This way the structure of the labial surface is retained – subsequent, time-consuming contouring of a natural surface relief can be omitted. However, it must be kept in mind that if the remaining layer thickness decreases, the intensity of the materials which are subsequently layered in will increase.



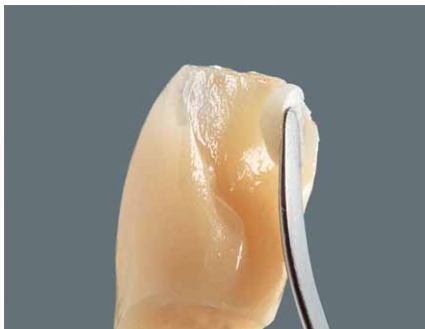
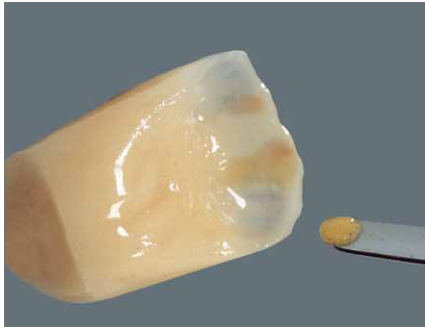
Adequate grinding of marginal areas is the precondition for smooth transition between VITA PHYSIODENS acrylic teeth and the light-curing microparticle composite VITA VM LC. To prepare the acrylic teeth for optimum bonding, tungsten carbide burs must be used as grinding tools.



The desired reduction is performed in the cervical area without altering the tooth shape.



The ground surface is cleaned carefully and wetted with VITA VM LC MODELLING LIQUID.



Depending on which type of customization is to be achieved, the suitable shade is layered in: for this purpose ten different VITAVM LC PAINT materials are available; additionally, VITA Akzent powder can be mixed with VITAVM LC WINDOW and applied to selected points. Intermediate polymerizing needs to be carried out in order to fix the materials.

To ensure perfect application, a thin layer of VITAVM LC WINDOW is applied. The tooth is built up with VITAVM LC ENAMEL, EFFECT ENAMEL or NEUTRAL materials – respectively BASE DENTINE or EFFECT LINER materials in the cervical area – and polymerized. In case of a layer thickness of more than 2 mm, end polymerization must be carried out; afterwards layering can be continued if the dispersive layer is preserved.

After the end polymerization, the restoration is finished using suitable abrasive tools and polished.

Note: VITAVM LC PAINT and mixtures of VITAVM LC WINDOW and VITA Akzent should not be on the surface and need to be completely coated with VITAVM LC dentine or enamel materials. When applying the material, air inclusions must be avoided. For information on polymerizing and hazard information refer to the Working instructions 1200E.

The completed restoration

VITAPAN teeth can be customized in accordance with the processing method described above.



What is required for customizing prefabricated teeth?

Using VITAVM LC materials and mixtures of VITAVM LC WINDOW and the powders of the VITA Akzent ceramic stains, VITA PHYSIODENS anteriors can be customized within limited working time so that the lifelike surface structure and basic shape of the teeth are maintained.

Type and extent of customization depend on the conditions of the patient's natural dentition and his wishes:

In the field of full dentures it is quite helpful to learn some facts about the habits and the age of the patient to be able to adapt the acrylic teeth systematically.

Photos are used as a basis for customizing in order to reproduce a realistic result.

In the field of partial dentures, the residual residual dentition provides the orientation for the customization (photos, shade-taking).



VITAVM[®] LC 3D-MASTER[®]

VITAVM LC is a new light-curing microparticle composite to be used for fixed and removeable restorations.

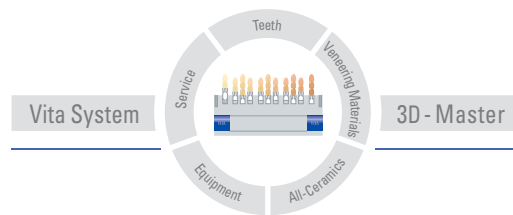
VITAVM LC is an integral component of the innovative VITA VM concept. The VITA SYSTEM 3D-MASTER shades can be perfectly reproduced with the VITAVM LC BASIC layering technique. The material exhibits refraction and reflection behavior similar to enamel. The fine-structured inorganic filler with a primary particle size of just a few nanometers ensures high translucency and brilliance of the composite. VITAVM LC offers outstanding material- and processing-technical properties.

The VITAVM LC PAINT materials provide numerous options to achieve color effects from the depth and individual characteristics such as calcifications, enamel cracks and discoloration caused by smoking. Shades and designations of the materials are identical with those of the VITA Akzent ceramic stains.

VITA Akzent[®]

The ceramic stains consist of micro-fine grains, are very intensive, can be mixed with each other and exhibit superior color stability. Accordingly, they can be used to achieve nuances of customizations (see also publication No. 771).


The unique VITA SYSTEM 3D-MASTER allows to systematically determine and entirely reproduce all natural tooth shades.



Please note: Our products should be used according to the working instructions. We cannot be held liable for damages resulting from incorrect handling or usage. The user is furthermore obliged to check the product before use with regard to its suitability for the intended area of applications. We cannot accept any liability if the product is used in conjunction with materials and equipment from other manufacturers which are not compatible or not authorized for use with our product. Furthermore, our liability for the correctness of this information is independent of the legal ground and, in as far as legally permissible, is limited to the invoiced value of the goods supplied excluding turnover tax. In particular, as far as legally permissible, we do not assume any liability for profit loss, for indirect damages, for consequential damages or for claims of third parties against the purchaser. Claims for damages based on fault liability (culpa in contrahendo, breach of contract, unlawful acts, etc.) can only be made in the case of intent or gross negligence. The VITA Modulbox is not necessarily a component of the product. Date of issue of this publication: 01/07



1245E - 0107 (4.) SI

VITA Zahnfabrik is certified in accordance with the Medical Device Directive and the following products mentioned in this brochure bear the mark  0124:

VITAVM.LC
VITA Akzent
VITA PHYSIODENS®
VITAPAN®

VITA

VITA Zahnfabrik H. Rauter GmbH & Co.KG
Postfach 1338 · D-79704 Bad Säckingen · Germany
Tel. +49/7761/562-222 · Fax +49/7761/562-446
www.vita-zahnfabrik.com · info@vita-zahnfabrik.com